

Tilt & Lift 25 RTS Central

EN Instructions

FR Notice

IT Manuale

ES Manual

PT Instruções

EL Οδηγίες

Ref. 5113053B

HOME MOTION by

somfy®



TRANSLATED INSTRUCTIONS

CONTENTS

1. Prerequisite information	3	3. Use and maintenance	10
1.1. Fields of application	3	3.1. Mode selection: Roller or Tilting mode	10
1.2. Liability	4	3.2. Up, Down, My: In roller mode	11
2. Installation	4	3.3. Up, Down, My: In tilting mode	11
2.1. Installation	5	3.4. Additional settings	12
2.2. Wiring	6	3.5. Tips and recommendations for use	13
2.3. Commissioning	6	4. Technical data	14
2.4. Tips and recommendations for installation	8		

1. PREREQUISITE INFORMATION

1.1 FIELDS OF APPLICATION

The Tilt & Lift 25 RTS Central is a motor specially dedicated to interior applications. The Tilt & Lift 25 RTS Central can motorize roman, pleated, venetian and cellular blinds.

The Tilt & Lift 25 RTS Central is a battery operated motor, powered with lithium primary batteries or NiMH batteries with solar pack. The motor can also be powered by a power supply.

Use only the below Somfy references with this motor :

Ref. 9018685 : 12V RELOADABLE TUBE (8 AA LITHIUM) + Ref. 9014834 : 8 AA LITHIUM BATTERY PACK

Ref. 9018608 : 12V RELOADABLE TUBE (10 AA NIMH) + Ref. 9018621 : 10AA NIMH BATTERIES

Ref. 9019034 : SOLAR PACK

Ref. 1822445 : 12V AC/DC Power Supply

Caution : Batteries must be installed as shown on the battery tube.

Do not mix type, brand or used batteries with new.

Warning : The Tilt & Lift 25 RTS Central is compatible only with the «Sunis Indoor Wire-Free™ RTS» sensor.

Warning : The Tilt & Lift 25 RTS Central cannot be used with sealed double glazing.



Please separate storage cells and batteries from other types of waste and recycle them via your local collection facility.

1.2 LIABILITY

Before installing and using the motor, please read **operating and installation guide carefully**. In addition to following the instructions given in this guide, the instructions detailed in the attached **Safety instructions** document must also be observed.

The motor must be installed by a motor and home automation professional, according to instructions from Somfy and the regulations applicable in the country in which it is commissioned.

It is prohibited to use the motor outside the fields of application described above. Such use, and any failure to comply with the instructions given in this guide and in the attached **Safety instructions** document, absolves Somfy of any liability and invalidates the warranty.

The installer must inform its customers of the operating and maintenance conditions for the motor and must provide them with the instructions for use and maintenance, and the attached **Safety instructions** document, after installing the motor. Any After-Sales Service operation on the motor must be performed by a motor and home automation professional.

If in doubt when installing the motor, or to obtain additional information, contact a Somfy adviser or go to the website www.somfy.com



Safety warning!



Caution!



Information

2. INSTALLATION



Instructions which **must** be followed by the motor and home automation professional installing the Tilt & Lift 25 RTS central motor.



Never drop, knock, drill or submerge the motor.

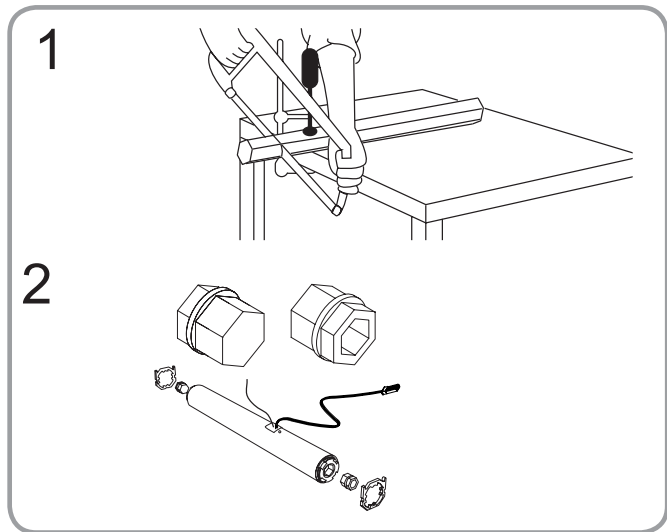


Install a separate control point for each motor.

2.1. INSTALLATION

2.1.1. Motor preparation

- 1) Cut the shaft to the length required.
- 2) Position the headrail and shaft adapters on the motor.



2.1.2. Motor integration inside the headrail

- 1) Insert the motor in the headrail.

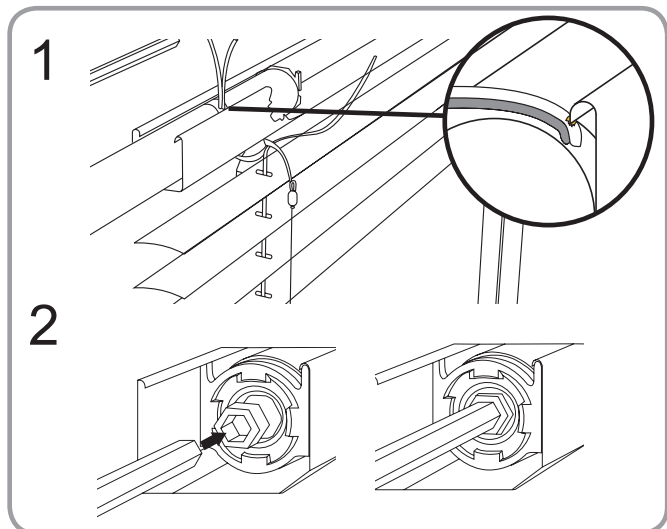


Take care not to cut the power supply wires on the edges of the headrail when introducing the motor.

- 2) Let the shaft abut against the motor shaft adapters.



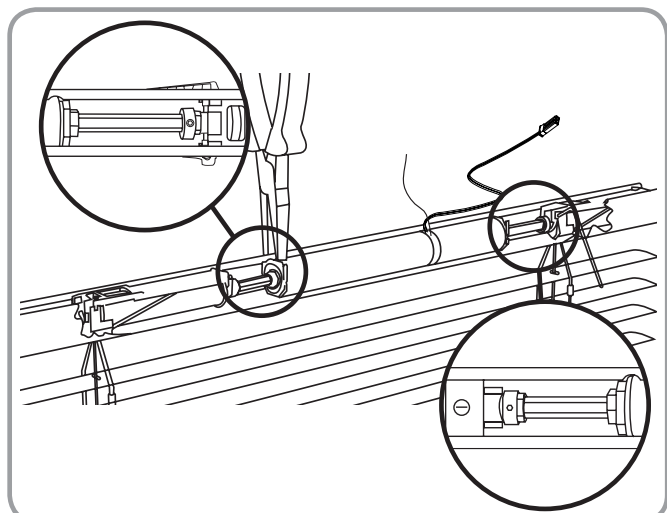
For optimal radio reception, the antenna should be kept straight and outside the headrail.



2.1.3. Motor and shaft locking

Using the relevant tool, pinch headrail edges to block motor translation.

To lock the shaft, place stop rings against the CTS, and screw them.



2.2. WIRING



Cables which pass through a metal wall must be protected and isolated using a sheath or sleeve.



Attach cables to prevent any contact with moving parts.



The cable for the Tilt & Lift 25 RTS Central cannot be removed. If it is damaged, return the drive to the After-Sales department.



Leave the motor power supply cable accessible: it must be possible to replace it easily.

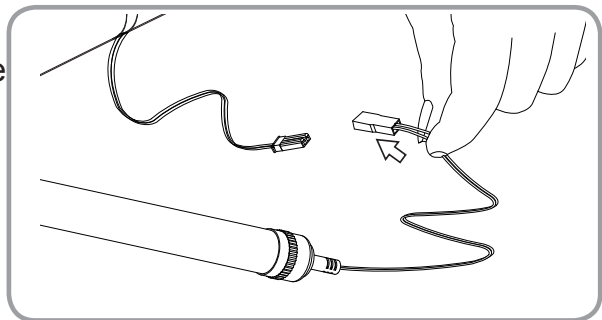


Do not unplug the battery when the motor is working.

Plug the battery or the power supply with the motor supply cable :



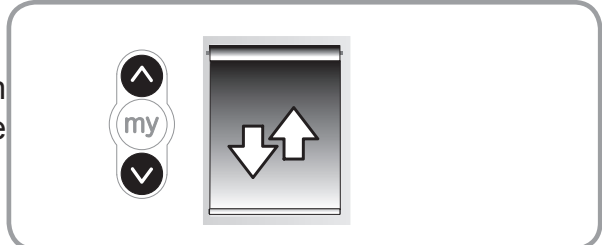
Do not unplug the battery or the power supply when the motor is working.



2.3. COMMISSIONING

2.3.1. Programming the RTS control point

Press the **Up** and **Down** buttons simultaneously on the RTS control point: the motorised product moves up and down and the control point is preprogrammed in the motor



2.3.2. Checking the direction of rotation

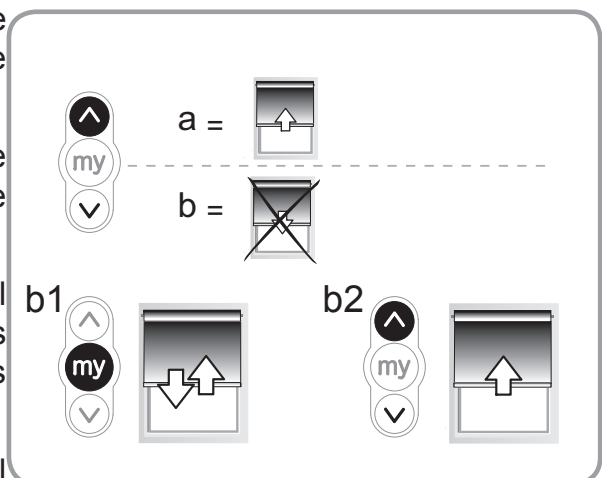
Press the **Up** button on the RTS control point:

a) If the motorised product rises (a), the direction of rotation is correct: Move onto the section 5.3 entitled "Setting the end limits".

b) If the motorised product lowers (b), the direction of rotation is incorrect: Move onto the next step.

b1) Press the **my** button on the RTS control point until the motorised product moves up and down: The direction of rotation has been modified.

b2) Press the **Up** button on the RTS control point to check the direction of rotation.



2.3.3. Setting the end limits

The end limits can be set in any order.



Do not set the upper end limit in a position in which the fabric or slats are fully pressed against the headrail, as this could damage the motorised product and/or the motor in the long term.

1) Raise the motorised product to the desired position by pressing the **Up** button.

2) Press the **my** and **Down** buttons at the same time until the motorised product moves.

The upper end limit is memorised.

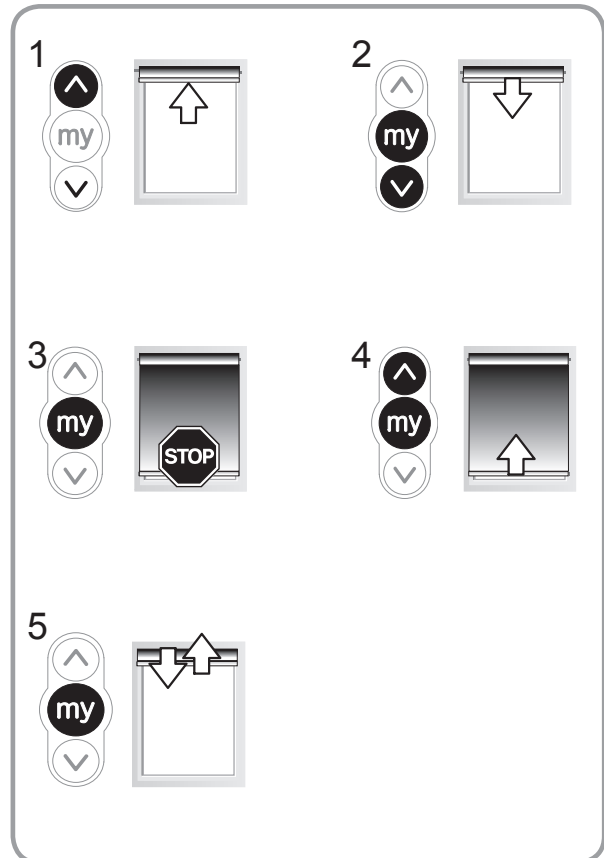
3) Press the **my** button when the motorised product reaches the desired lowered position. If necessary, adjust the position of the motorised product using the **Up** and **Down** buttons.

4) Press the **my** and **Up** buttons at the same time until the motorised product moves.

The lower end limit is memorised. The motorised product rises and stops in the raised position.

5) To confirm the end limits, press the **my** button until the motorised product moves up and down.

The end limits are programmed.

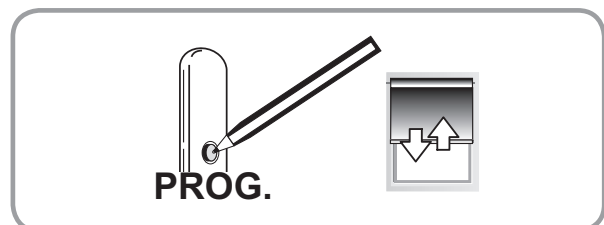


2.3.4. Recording the RTS control point

The motorisation is in programming mode:

Quickly press the PROG button on the RTS control point to be programmed:

The motorised product moves up and down: this RTS control point is programmed in the motorisation.



If the motorisation is no longer in programming mode, repeat Step 2.3.1 then perform Step 2.3.4.

2.4. TIPS AND RECOMMENDATIONS FOR INSTALLATION

2.4.1. Questions about the Tilt & Lift 25 RTS Central?

Observations	Possible causes	Solutions
The motorised product does not operate.	There may be some radio interferences.	Unplug the motor supply cable and reconnect the battery tube to the motor.
	One or more batteries have been mounted backwards.	Verify that batteries are all mounted in the correct manner.
	One or more batteries leak in the battery tube.	Replace the batteries
	Batteries (inside battery tube) are weak.	Check whether the batteries are weak and replace if necessary.
	The control point battery is weak.	Check whether the battery is weak and replace it if necessary.
	The control point is not compatible.	Check for compatibility and replace the control point if necessary.
	The control point used has not been programmed into the motor.	Use a programmed control point or program this control point.

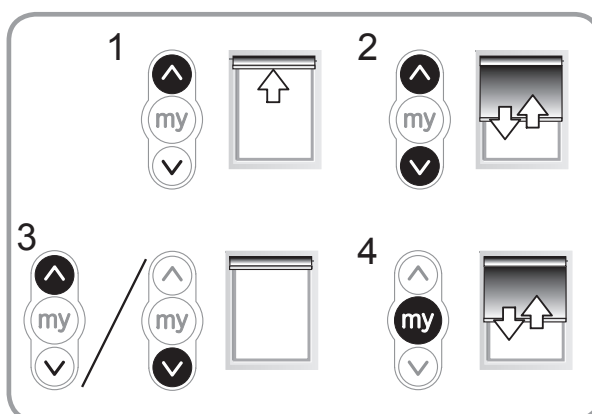


To press on the motor PROG button, it's best to use the motor antenna. The use of other tools could damage the PROG button.

2.4.2. Re-setting the end limits

Readjusting the upper end limit

- 1) Press the **Up** button to bring the motorised product to the end limit to be readjusted.
- 2) Press the **Up** and **Down** buttons at the same time until the motorised product moves up and down.
- 3) Press the **Up** or **Down** button to move the motorised product to the new desired position.
- 4) To confirm the new end limit, press the **my** button until the motorised product moves up and down.



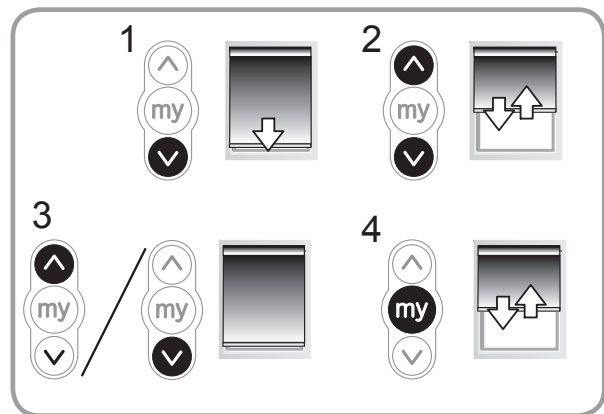
Readjusting the lower end limit

1) Press the **Down** button to bring the motorised product to the end limit to be readjusted.

2) Press the **Up** and **Down** buttons at the same time until the motorised product moves up and down.

3) Press the **Up** or **Down** button to move the motorised product to the new desired position.

4) To confirm the new end limit, press the **my** button until the motorised product moves up and down.

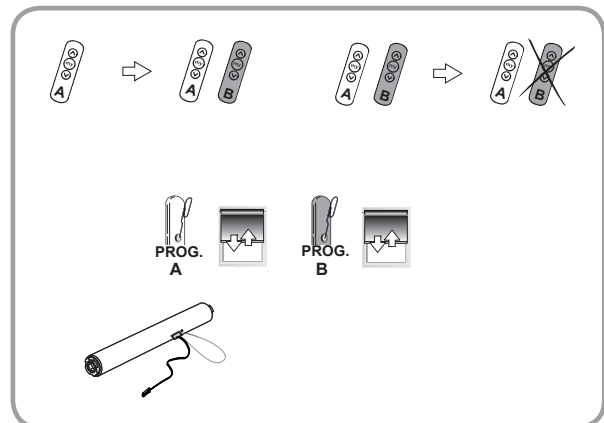


2.4.3. Adding or deleting a RTS control point

Find an RTS control point (A) programmed in the motor.

Press and hold the RTS programmed control point (A) PROG button or the motor PROG button until the motorised product moves up and down: the motor is in programming mode.

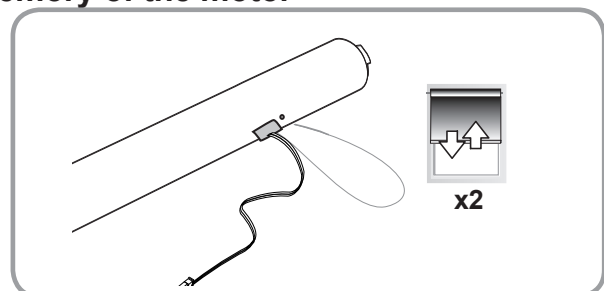
Quickly press the RTS control point(B) PROG button to add or delete: the motorised product moves up and down and the RTS control point is programmed or deleted from the motor.



2.4.4. Erasing the control point from the memory of the motor

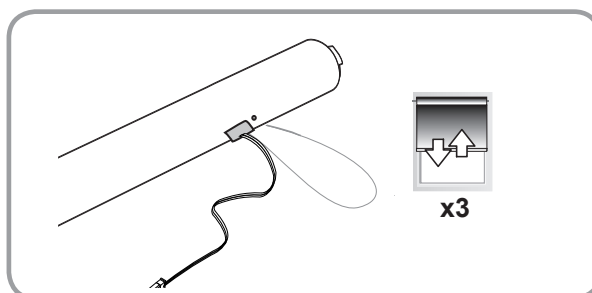
To delete all the programmed control points, press and hold the motor PROG button until the motorised product moves up and down twice.

All the control points are deleted.




2.4.5. Erasing the memory of the motor

To reset the motor, press and hold the PROG button on the motor head until the motorised product moves up and down 3 times. All the settings are erased.



3. USE AND MAINTENANCE

 This motor is maintenance-free

3.1. MODE SELECTION: ROLLER OR TILTING MODE



The mode selection is only possible if step 2.3.4. has already been completed.

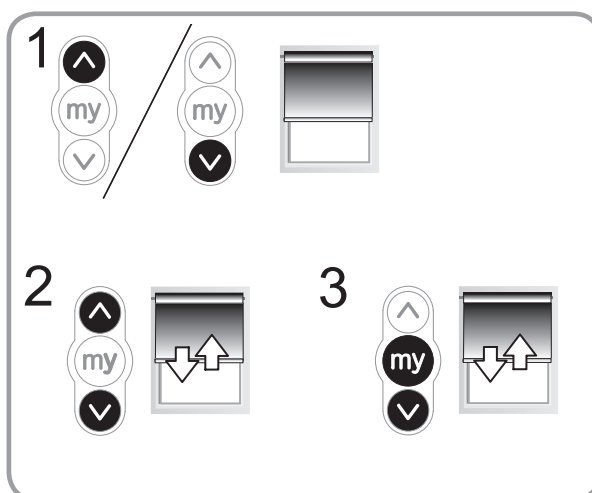
The Tilt & Lift 25 RTS Central is designed to work with 2 modes: Tilting mode or Roller mode. This feature allows the Tilt & Lift 25 RTS to be set according to the type of blind you are working with. The Tilt & Lift 25 RTS is set by default to work in Tilting mode.

1) Move the motorised product away from the end limits.

2) Simultaneously press the **Up** and **Down** buttons until the motorised product moves up and down.

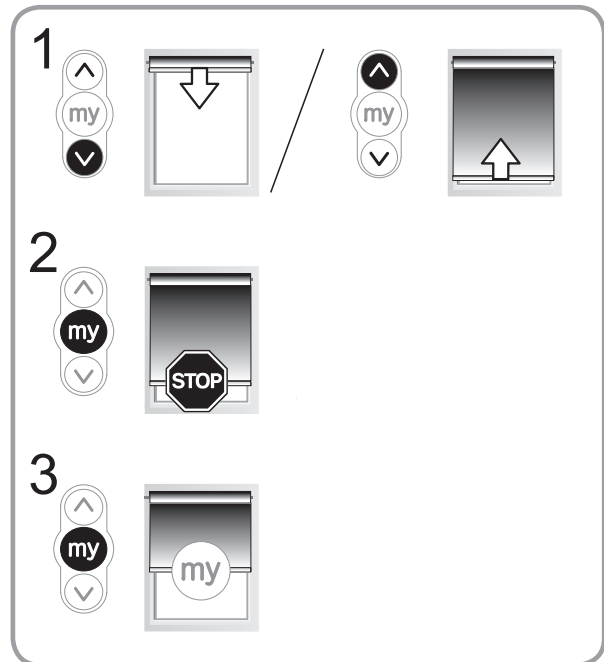
3) Press and hold the **my** and **Down** buttons simultaneously until the motorised product moves up and down to change from Roller mode to Tilting mode.

To return to previous mode, repeat step 1.



3.2. UP, DOWN, MY: IN ROLLER MODE

1) to move the motorised product from a limit to the other limit, press briefly the **Up** or **Down** button

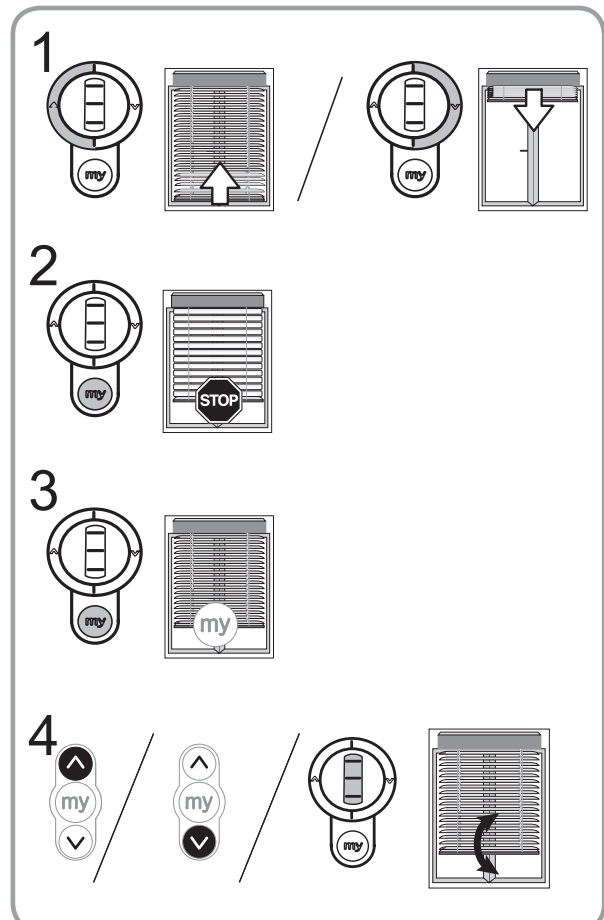


2) To stop the motorised product, press the **my** button.

3) If a my position is recorded, To move the motorised product to this my position, press briefly the **my** button.

3.3. UP, DOWN, MY: IN TILTING MODE

1) To move the motorised product from a limit to the other limit, briefly press (less than 0,5s) the **Up** or **Down** button.



2) To stop the motorised product, press the **my** button.

3) If a my position is recorded, To move the motorised product to this my position, press briefly the **my** button.

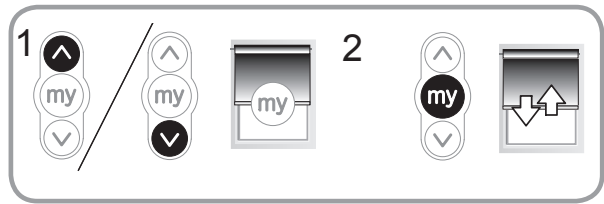
The motorised product first goes to the down end limit, then to the my position.

4) To tilt the slats, press and hold the **Up** or **Down** button or use the scroll of the remote control, until the slats reach the desired position.

3.4. ADDITIONAL SETTINGS

3.4.1. Record or Modify the favourite position (my)

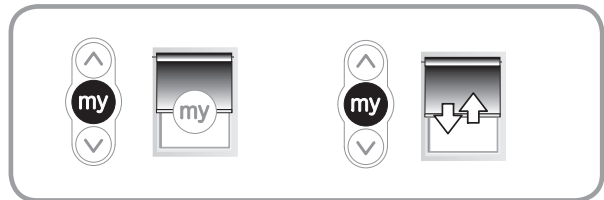
- 1) Place the motorised product in the desired favourite position (my).
- 2) Press **my** until the motorised product moves up and down: the desired favourite position (my) has been programmed.



i In tilting mode (the default mode), if you want to save a favorite slat position, turn the motorised product necessarily in the down end limit, then set the desired position by pressing the Up button.

3.4.2. Deleting the favourite position (my)

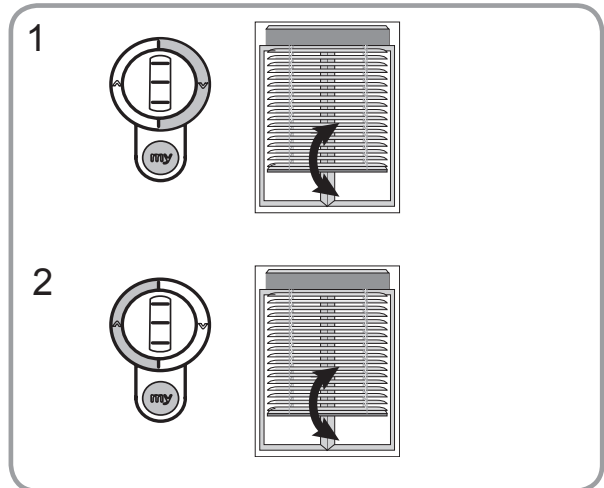
To delete the my position, press the **my** button to move to this position and press the **my** button until the motorised product moves up and down.



3.4.3. Adjusting the tilting speed

1) To decrease the tilting speed, press and hold the **my** and **Down** buttons simultaneously until the motorised product moves up and down. Repeat as needed. If the motorised product does not move up and down, then the minimum setting has been reached.

2) To increase the tilting speed, press and hold the **my** and **Up** buttons simultaneously until the motorised product moves up and down. Repeat as needed. If the motorised product does not move up and down, then the maximum setting has been reached.



3.4.4. Modifying the motor rotation direction

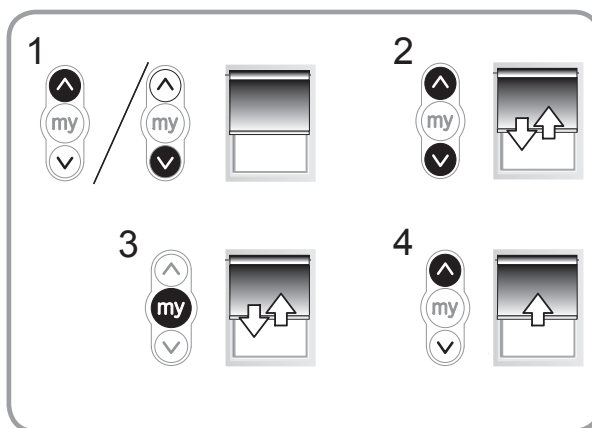
1) Move the motorised product away from the end limits.

2) Press the **Up** and **Down** buttons simultaneously until the motorised product moves up and down.

3) Press the **my** button until the motorised product moves up and down to reverse the rotation direction.

4) Press the **Up** button to check the new rotation direction.

The motor rotation direction is reversed.

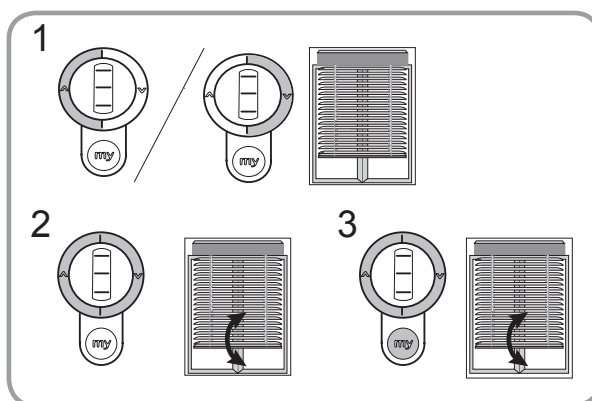


3.4.5. Modifying the wheel rotation direction

1) Move the motorised product away from the end limits.

2) Press the **Up** and **Down** buttons simultaneously, until the motorised product makes an Up and Down movement.

3) Press the **Up**, **my** and **Down** buttons simultaneously, until the motorised product moves up and down, to reverse the wheel rotation direction.



3.5. TIPS AND RECOMMENDATIONS FOR USE


Questions about the Tilt & Lift 25 RTS Central?

Observations	Possible causes	Solutions
The motorised product does not operate.	One or more batteries have been mounted backwards.	Verify that batteries are all mounted in the correct manner.
	One or more batteries leak in the battery tube.	Replace the batteries
	Batteries (inside battery tube) are weak.	Check whether the batteries are weak and replace if necessary.
	The control point battery is weak.	Check whether the battery is weak and replace it if necessary.

If the motorised product still does not work, contact a motorisation and home automation professional.

4. TECHNICAL DATA

Power supply	12 Vdc SELV
Radio frequency	433,42 MHz
Torque	0,8 Nm
Up speed	30 rpm
Down speed	45 rpm
Electrical insulation	III
Minimum distance between two end-limit	1 turn
Maximum distance between two end-limit	110 turns
Maximum running time	6 min
Operating temperature	0°C to + 60°C
Protection rating	IP 20 (For indoor use only)
Maximum number of associated control	12

 Somfy hereby declares that the drive covered by these instructions and used as intended according to these instructions, is in compliance with the essential requirements of Directives 2006/42/EC, and 2014/53/EU.

A declaration of conformity detailing the standards and specifications used and stating all particulars for identification of the drive, name and address of the person(s) authorised to compile the technical file and empowered to draw up the declaration including place and date of issue is available at www.somfy.com/ce.